

Tips and Techniques for Air Assisted Lateral Transfer Devices



Todd MacRae
CSPHA



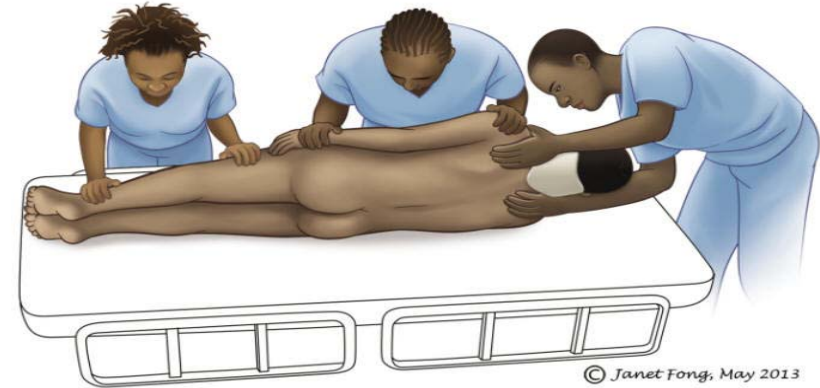
Overview

- Applying and removing a Matt
- Everyday uses- repositioning patient, linen change, radiolucent
- Options within the ranges
- Using the Matt for patient retrieval- e.g Ambulance
- Prone positioning a patient
- Turning a patient
- Trendelenburg- factors and options around slippage



Applying and removing a Matt

- Policy/Procedure- when and where?
- Perfect world- ASAP Real world.....?
- Log roll patient
- Removal can be done by reversing log roll or with inflating matt for one side removal- *demonstration later*



Everyday Uses- *Repositioning a patient*

- Not just for lateral transfer
- Up and down the bed/table/trolley/stretcher
- Used a lot in ICU and Aged Care



Everyday Uses- *Linen change*

- Transfer to another bed
- Moving patient around within the bed is much easier if on a matt
- Linen can pass under an inflated matt
- Turning a patient is easier- *demonstration later*



Everyday Uses- *Radiolucent*

- Xray, Radiology, CT Scans etc
- Recovery, post surgery
- Mobile Xray machines = less transfers



Everyday Uses- *Radiolucent*

Video 1





Options within the Ranges



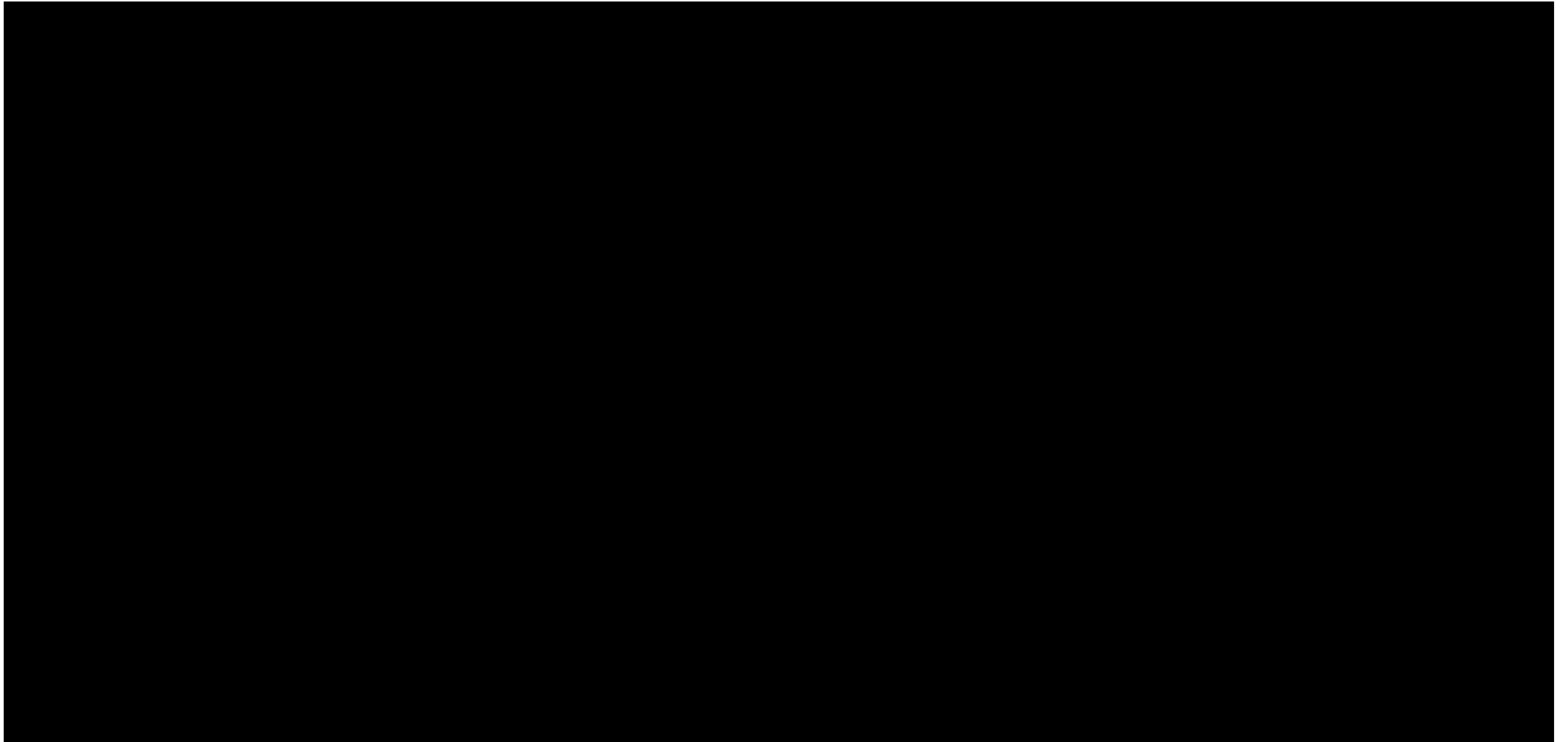
Options within the Ranges- *Half Matt & Split Leg*

Video 2 & 3

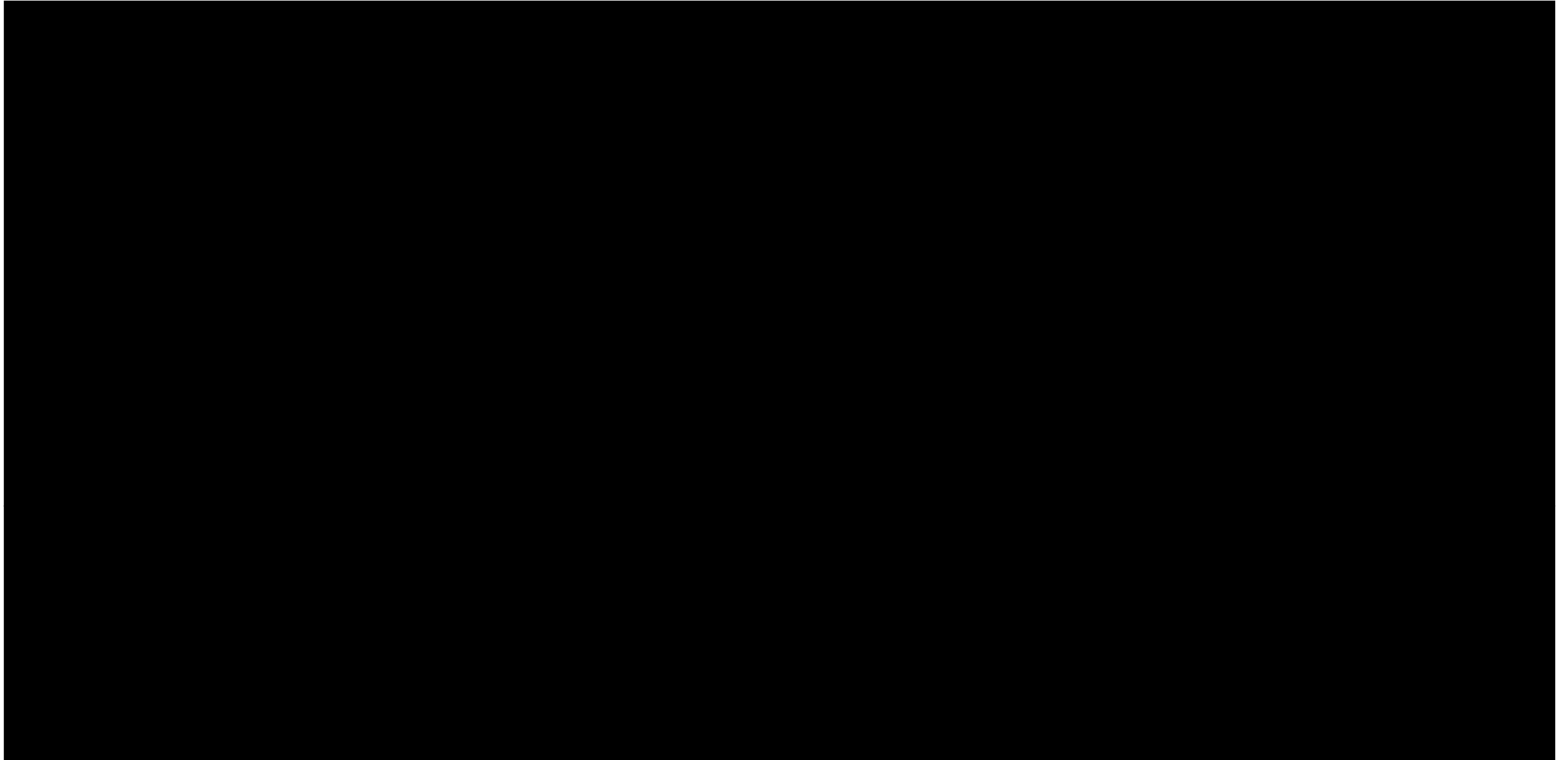




Half Matt



Split Leg Matt



Fracture table-Half-Matt & Split Leg



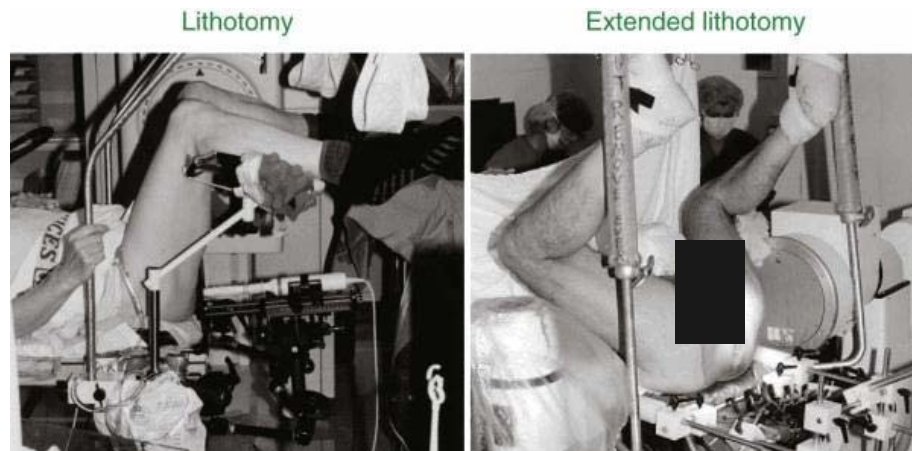
Hana Table Positioning

- Anterior Approach Total Hip or Total Knee



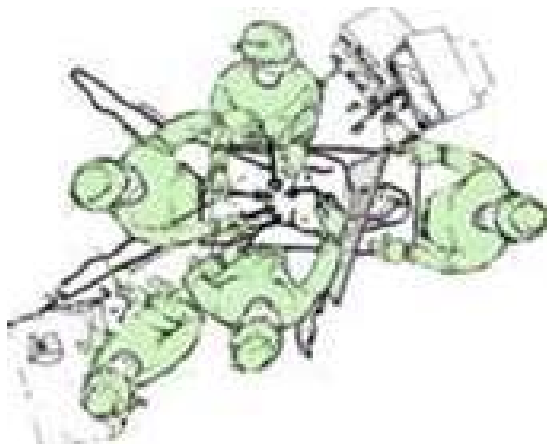
Lithotomy Position

- GYN Procedures, TURB, TURP, Perineal Prostatectomy
- Standard OR table with lithotomy supports, Cysto Table



Modified Lithotomy or French Position

- Standard OR table with straight leg boards
- Gastric Bypass or Lap Band Surgery

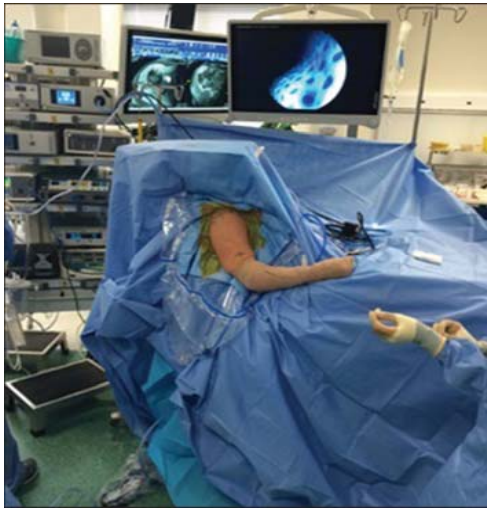


Seated transfer-Half-Matt



Seated (Fowler's) Position

- Shoulder Surgery or Breast Reconstruction
- Beach Chair



Options within the Ranges- *Bariatric*



39" and 50"
Matts available



Using the Matt for patient retrieval

Video 4





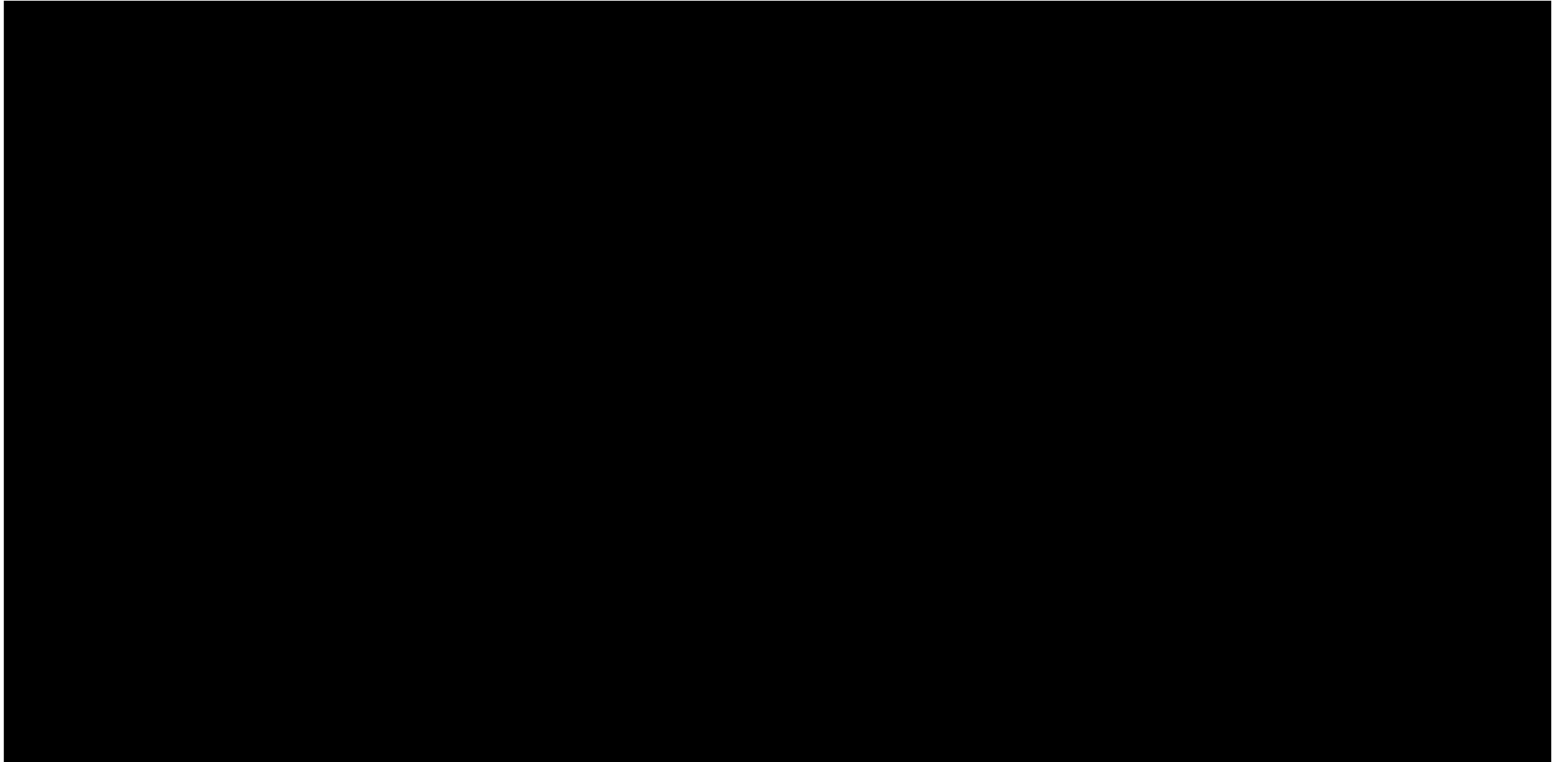
Prone Positioning a Patient

Video 5 & 6



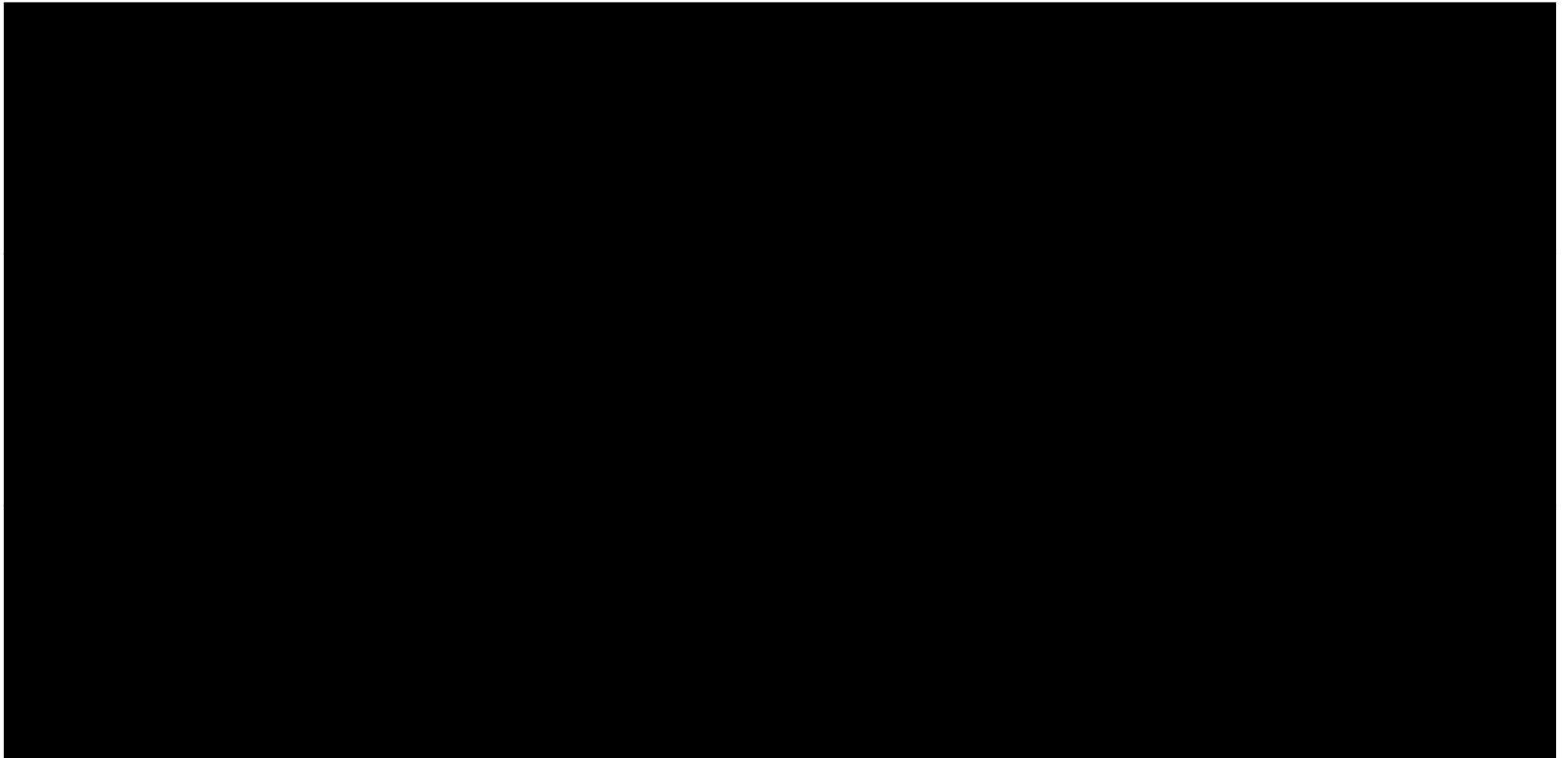


Technique 1



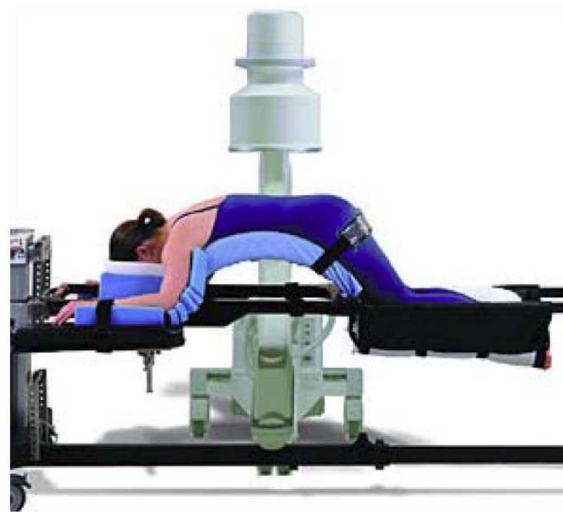


Technique 2



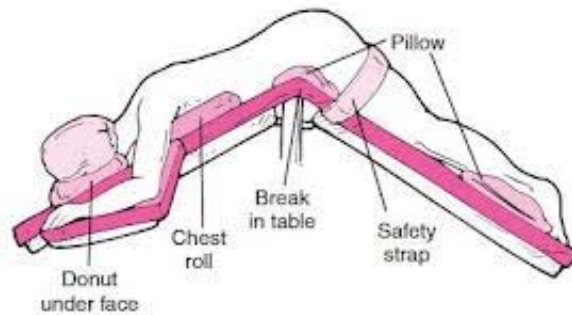
Prone Position

- Jackson Table/Wilson Frame
- Spinal Surgery or Neurosurgery



Jackknife Position

- Gluteal and Anorectal Procedures
- Standard OR Table



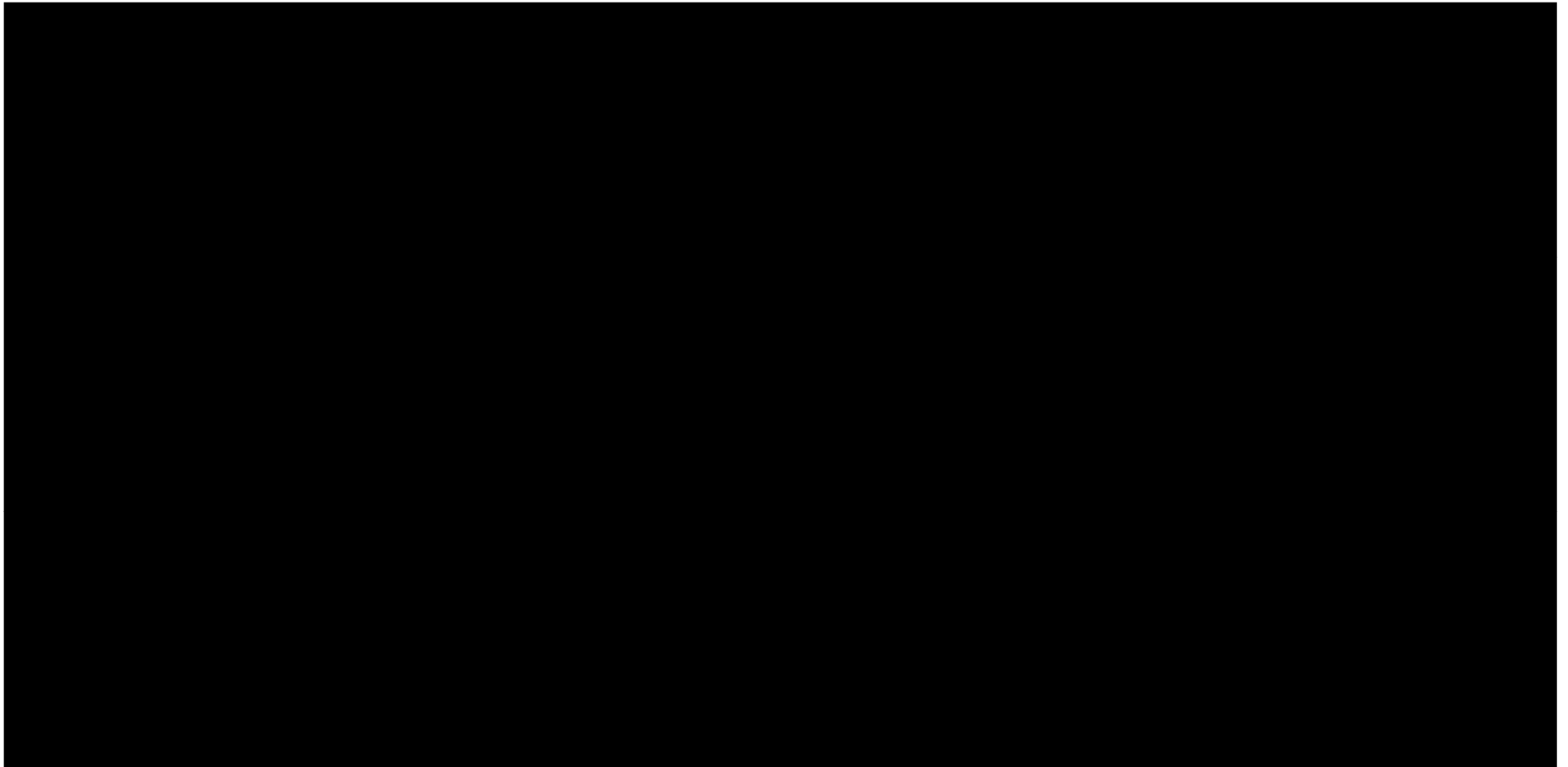
Turning a Patient

Video 7 & 8



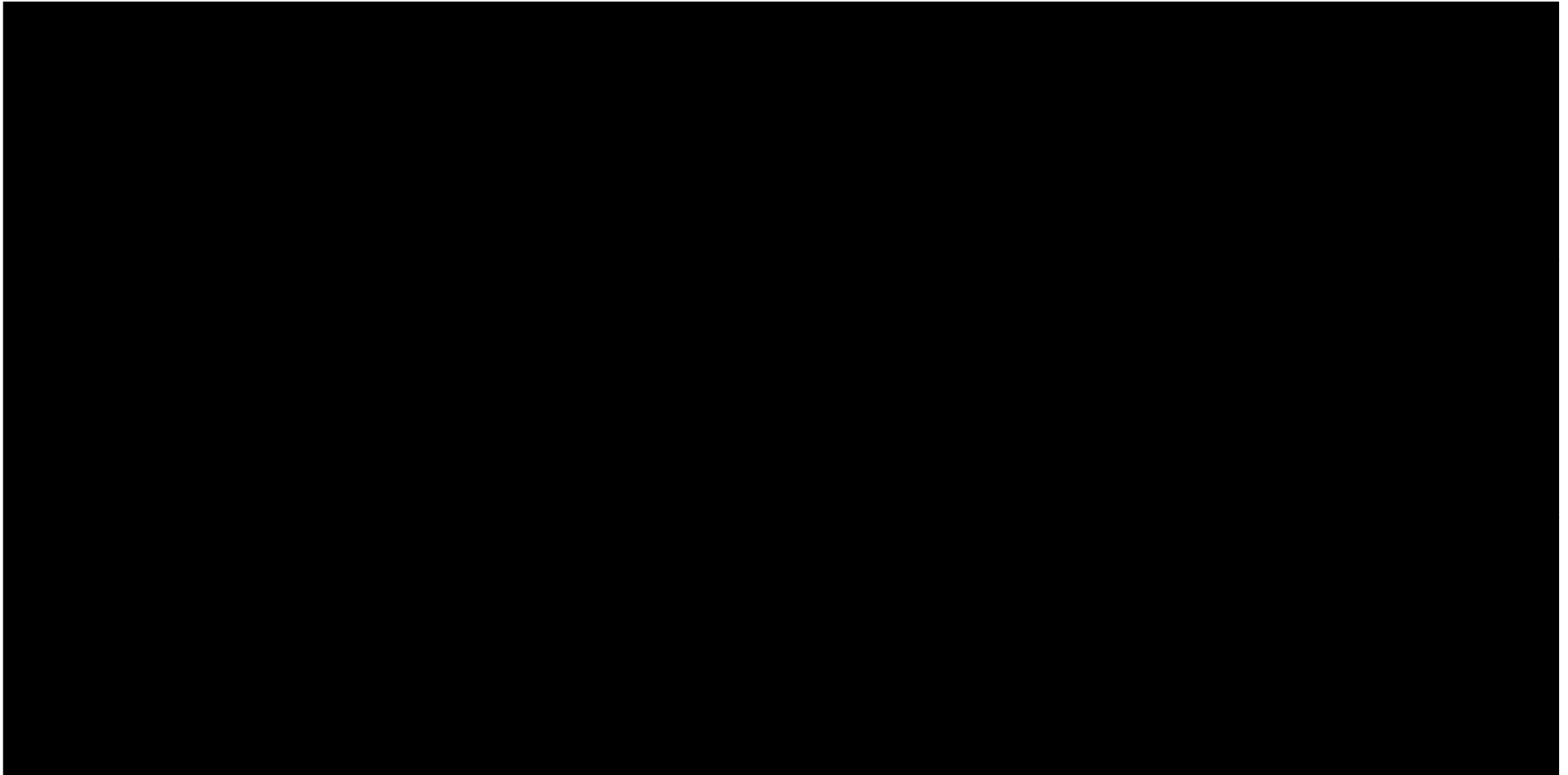


Technique 1





Technique 2



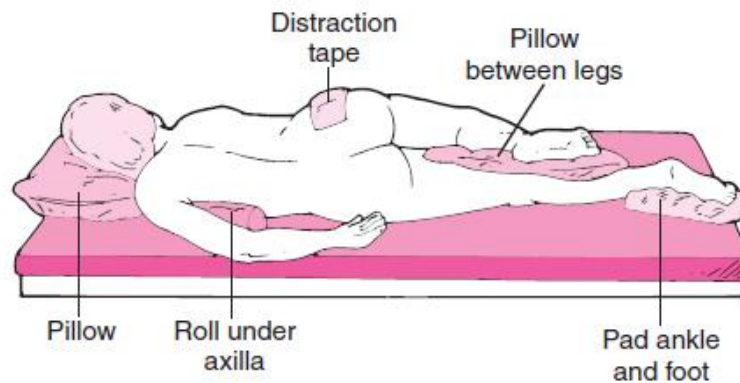
Basic Lateral Position

- Traditional Hip, Shoulder, Hemi-Thoracic, Renal
- Montreal Table/Peg Board Positioner

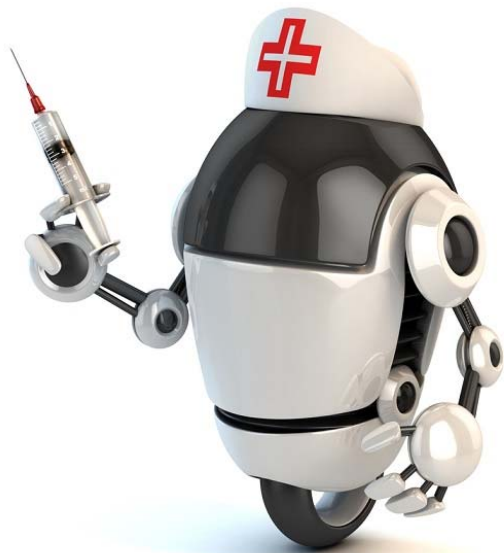


Lateral or Semi-Prone Position

- Hemi-Thoracic or Renal Surgery, EGD or ERCP
- Standard OR Table



Trendelenburg - *Factors and options around slippage*



VS



Trendelenburg - *Factors and options around slippage*

- Working with what you have
- Process with product change
- Next Best Alternative



Trendelenburg - *Factors and options around slippage*

Testing to determine at what angle 92kg patient began to slip, when placed in trendelenburg on OR table							
Layer directly under the patient			Type of HoverMatt under linen or disposable cover sheet		Additional slip resistant aids		Angle at which patient began to slip
Linen Sheet (doubled)	Linen Sheet (single)	Disposable Cover Sheet	SPU Matt	Reusable Matt	2 x 'Slip No More' strips fixed to OR table pads	Thigh strap	
X			X		X		26°
	X		X		X		26°
X					X		28°
	X				X		26°
X				X	X		26°
	X			X	X		28°
X							24°
	X						24°
X			X				24°
	X		X				26°
X				X			24°
	X			X			26°
		X		X			26°
	X			X		X	27°

Trendelenburg - *Factors and options around slippage*



Trendelenburg - *Factors and options around slippage*

- Bean Bag & Gel Positioners



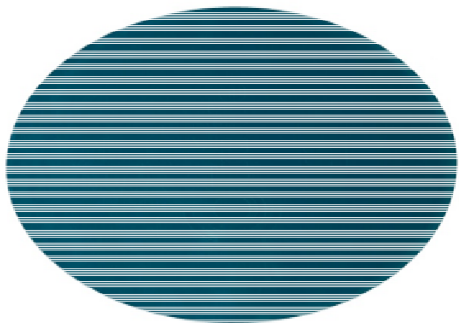
- Hug-U-Vac Steep Trendelenburg Positioner



- Velcro straps

Trendelenburg - *Factors and options around slippage*

- America- Trip-No-More
- Europe- Gel pads



THANK YOU

Any questions before hands on?

