

Gold Coast University Hospital

Ceiling track hoist lessons



Simone Eggers, Physiotherapist

Manual Handling and Ergonomics Coordinator, Safety and Wellbeing
Unit, Gold Coast Hospital and Health Service

Overview

1. Background
2. Our involvement through the stages
3. Lessons learned



Background: What we have at GCUH

- 5000 staff at this campus
- 500 to 750 beds
- Opened September 2013
- 0 to 220 ceiling hoists
 - 40 unused
 - 10 x 450kg bariatric single track
 - 3 bariatric X-Y to ensuite
 - 149 x 250kg standard single track systems (75% manual pivot, 25% electric pivot)
 - 18 standard X-Y to ensuite
 - 2 curved



Our involvement : decision made to install ceiling track hoists

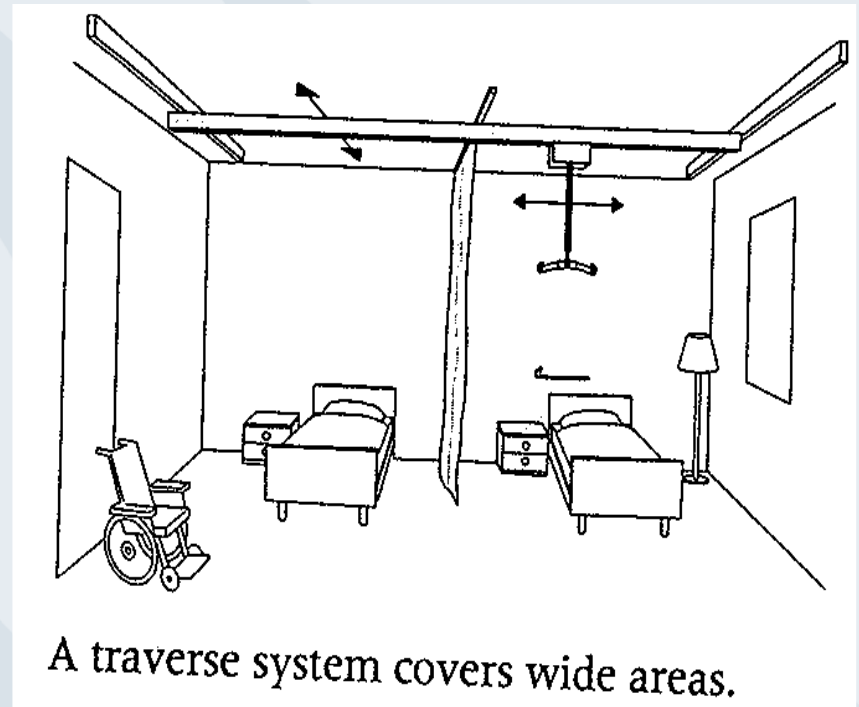
- VIP meetings: “Generic Inpatient Unit” group.
- Stakeholders: Members
- Contribute to “functional brief”
- Major decisions



Our involvement :

decision made to install ceiling track hoists

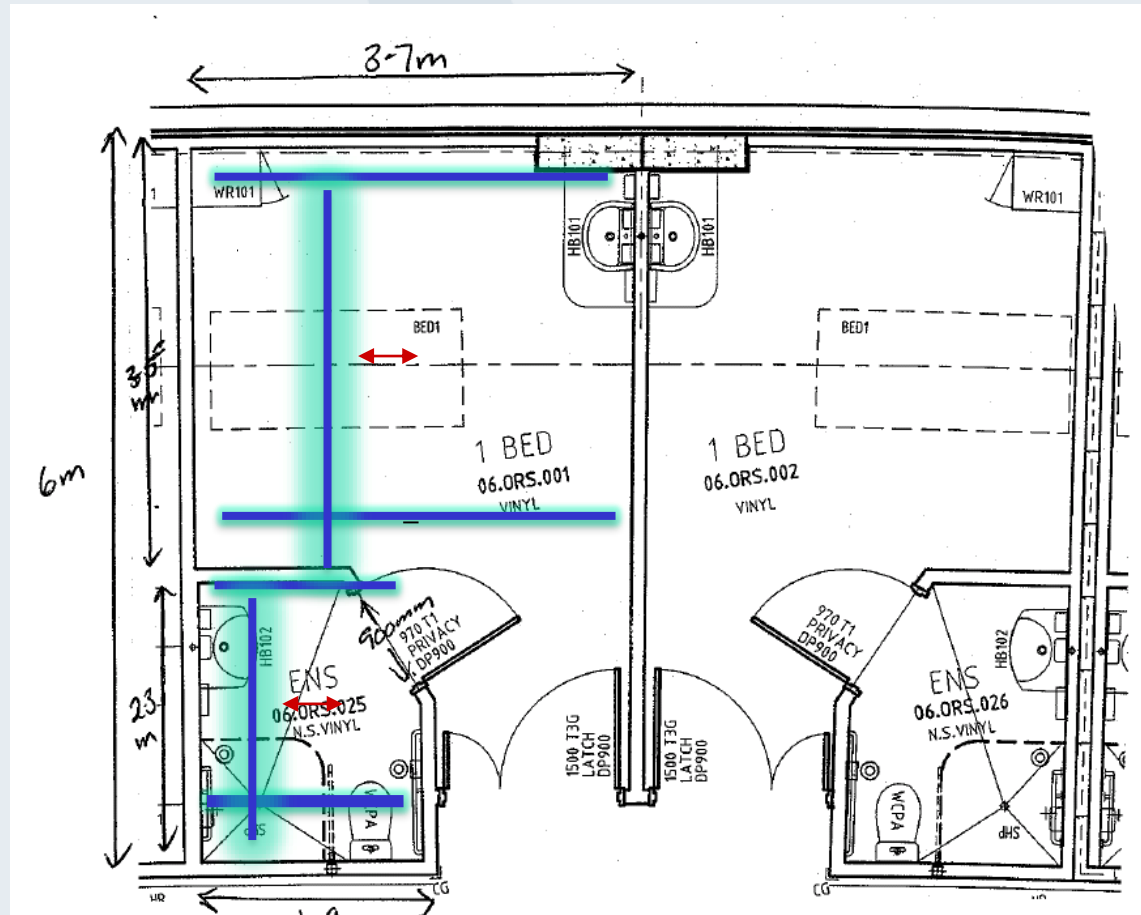
- OHS recommendations:
 - Ceiling track hoists
 - 100% Traverse systems
 - Floor covering



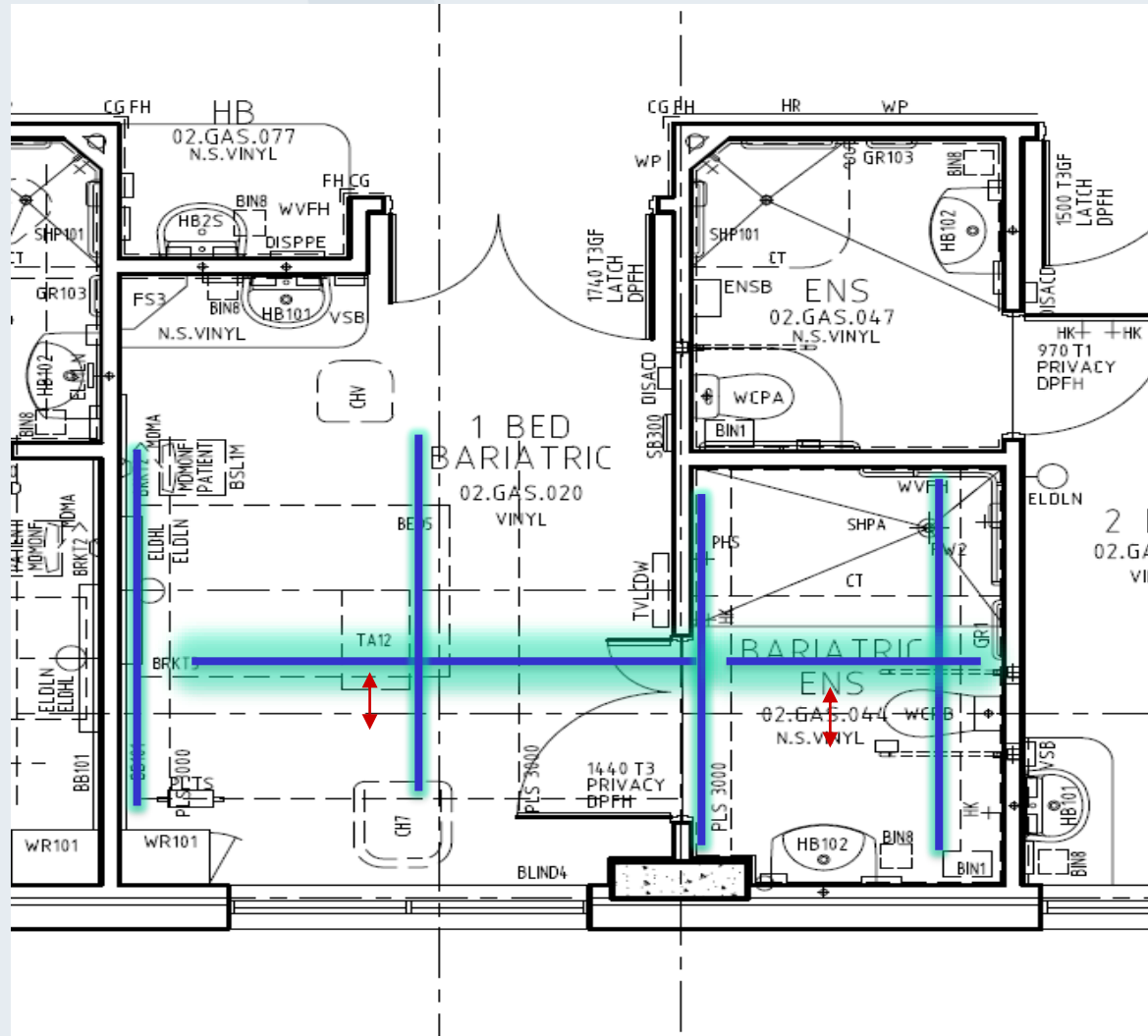
Prioritization stage

- Decisions of planning group:
 - 1 Bariatric 450kg room per ward
 - 1 “disabled” room per ward
 - 4 X two-bed bays per ward
 - Rest standard single occupancy rooms
 - 70% Vs national average 25%
 - With ‘inboard’ ensuites
 - Single tracks
 - Only traverse tracks to ensuite in bariatric and disabled rooms

GCUH standard single rooms with 'inboard ensuite' design



Bariatric room design with 'back to back ensuite' design



Specification

- Tender process and stages
- Assess functionality
- Advise: No single company
- Keep records



Ensuite
of
bariatric
room



Occupancy/Evaluation

Few issues:

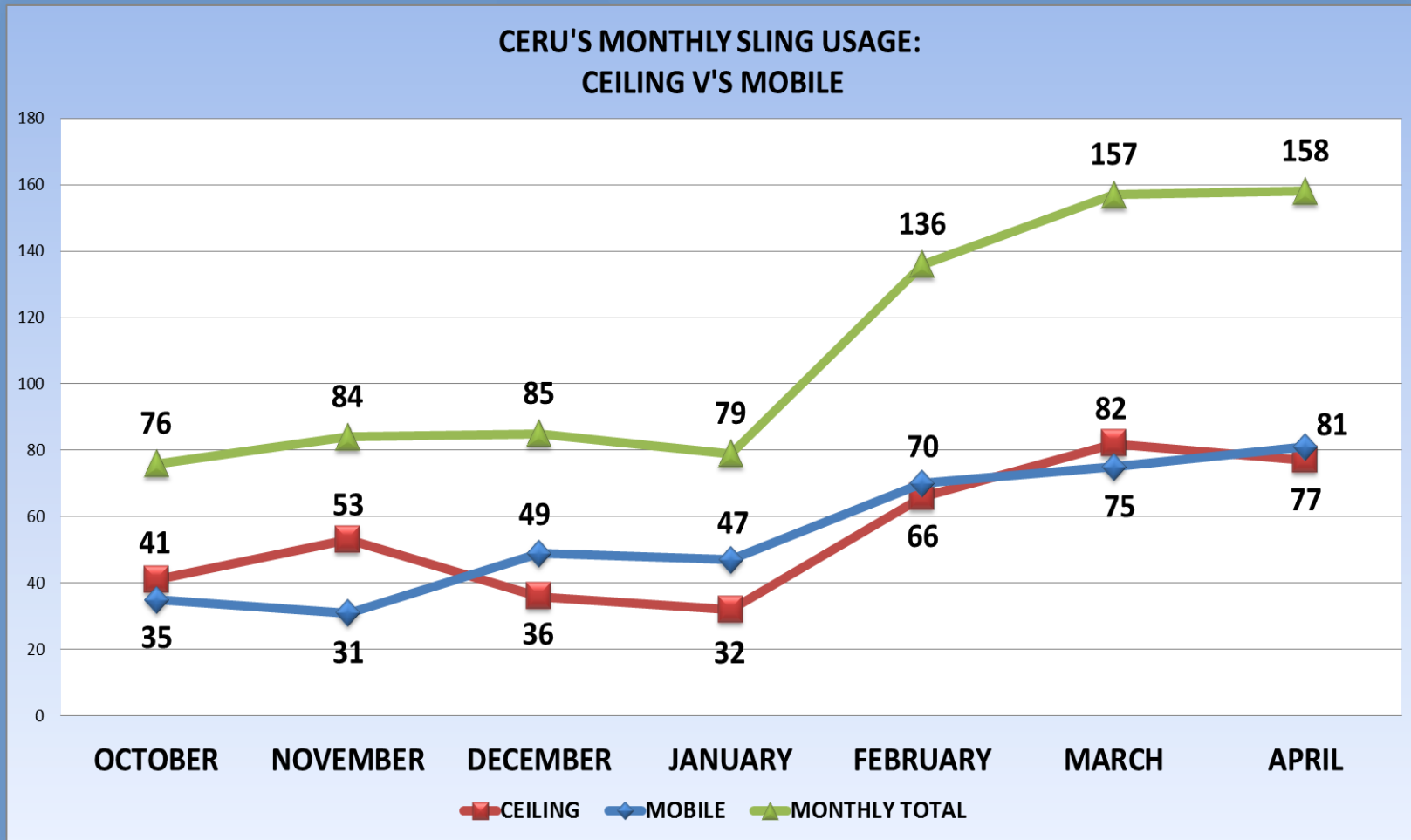
1. Design issues:

- Types of spreader bars switched
- Battery flattening
- Battery charging points over basins

2. Staff training



Evaluation



3. Lessons learned

1. VIP meetings and evidence
2. Stakeholders
3. Stages and terminology

